



# JUNIOR MARKET BARROW SHOW



**ENTRY DEADLINE: DECEMBER 1, 2023**

**Superintendents: Dr. Davey Griffin, Donald Kelm, Leslie Vann, Dr. Billy Zanolini**

**Arena Director: Paul Noak**

**Judges:**

**Eric Polich; Woodward, IA** (Spot, Poland China, Dark Crossbred, Landrace, Crossbred)

**Brandon Ogle; Nokomis, IL** (Berkshire, Hampshire, Duroc, Chester White, Yorkshire)

**WAVE 1 SHOW SCHEDULE** - (Berkshire, Spot, Poland China, Hampshire, Duroc, Dark Crossbred)

Arrival:	SCP will be open twenty-four hours a day starting at 7 PM on February 5. All projects must arrive at Salado Creek Property before entering East Gate. (Note: No animals may be unloaded at SCP at any time.)			
Barn unloading begins:	Friday	February 16	12:30 AM	SB & MAC
Exhibitor check-in:	Friday	February 16	7 AM – <b>3 PM</b>	MAC (Barrows not checked-in by <b>3 PM</b> are subject to disqualification)
Arrival deadline:	Friday	February 16	7 AM	SCP (Barrows not having arrived at SCP by 7 AM are subject to disqualification)
Show:	Saturday	February 17	7 AM	SB (Berkshire, Spot, Poland China, Hampshire)
Show:	Sunday	February 18	7 AM	SB (Duroc, Dark Crossbred)

**WAVE 2 SHOW SCHEDULE** - (Chester White, Yorkshire, Landrace, Crossbred)

Arrival:	SCP will be open twenty-four hours a day starting at 7 PM on February 5. All projects must arrive at Salado Creek Property before entering East Gate. (Note: No animals may be unloaded at SCP at any time.)			
Barn unloading begins:	Tuesday	February 20	2 AM	SB & MAC
Exhibitor check-in:	Tuesday	February 20	7 AM – <b>1 PM</b>	SB (Barrows not checked-in by <b>1 PM</b> are subject to disqualification)
Arrival deadline:	Tuesday	February 20	7 AM	SCP (Barrows not having arrived at SCP by 7 AM are subject to disqualification)
Show:	Wednesday	February 21	7 AM	SB (Chester White, Yorkshire, Landrace, Crossbred classes 89-100)
Show:	Thursday	February 22	7 AM	SB (Crossbred classes 101-114)
Auction:	Friday	February 23	1 PM	AB

**This show is subject to the San Antonio Stock Show & Rodeo General Rules, the Junior Livestock Show Rules and Special Rules listed in this section.**

**SPECIAL RULES**

**1. Eligibility:** The Junior Market Barrow Show is only open to **barrows** and is a **TERMINAL SHOW**.

2. **Entry:** Entries and payment must be submitted online and any necessary official San Antonio Stock Show & Rodeo forms must be completed. 4-H Clubs/FFA Chapters may submit a check if selected at entry checkout.
3. **Number Shown:** Each owner is limited to a maximum of one (1) barrow.
4. **Validation:** To be eligible to exhibit in the Junior Market Barrow Show, all barrows must be validated in the Texas 4-H and FFA Swine Validation Program. Failure to comply with the rules and regulations of the Texas Swine Validation Program in any manner will result in immediate disqualification.

UPDATED

5. **Show Check-in Procedures:** Exhibitors must check-in using materials provided by the Competitive Events office. Check-In must be completed by 3 PM the day of Check-In during Wave 1 and 1 PM the day of Check-In during Wave 2 or be subject to disqualification.

UPDATED

6. **Penning:** Junior Market Barrows will be penned on a first come-first serve basis upon arrival. The show reserves the right to pen two barrows per pen regardless of ownership. FFA Chapters and/or 4-H Clubs wishing to be stalled together must arrive together at the SCP Staging Area. Only barrows entered in the Market Barrow Show may arrive on grounds. Exhibitors are encouraged to bring pen dividers.

UPDATED

7. **Pens:** Pens will not be taken apart or altered in any way without Superintendent approval. No lights are to be strung on the pens. Pens may be lined on 3 sides at panel height only. Nothing may cover the gate or over the pen.

8. **Bedding:** NO OUTSIDE BEDDING WILL BE ALLOWED. All bedding will be provided by the show. The use of artificial grass mats and carpets are prohibited as bedding in all barns. Insofar as possible, appropriate types of bedding will be available for sale on the Grounds at the FEED STORE. Discretion as to what constitutes acceptable bedding is held exclusively by Show Management.

9. **Show Weights:** Official turn-in weight limits are: minimum 250 lbs. and maximum 300 lbs. inclusive. Exhibitors will turn in the official show weight for their barrow. All barrows with weights turned in below the minimum (250 lbs.) or above the maximum (300 lbs.) will be sifted.

10. **Re-Weigh:** Show Management reserves the right to weigh any barrow after the completion of Check-In. Upon re-weigh, *all barrows weighing less than 240 pounds* or more than 10 pounds heavier than the official turn-in weight will be disqualified.

\*Barrows that meet the minimum weight of 240 lbs. but are weighing more than 10 lbs. less than the official turn-in Show Weight will not be disqualified, but will be sold on the re-weigh weight. (i.e. Turn-in Show Weight = 260 lbs.; Re-weigh weight = 245 lbs.; Barrow will be sold at 245 lbs.)

**Breed/Division Champion Re-weigh:** Prior to selection of the Breed/Division Champion, all Class 1<sup>st</sup>/2<sup>nd</sup> or Division Champions and Reserve Champions may be re-weighed. Barrows weighing more than 10 lbs heavier than the official turn-in Show Weight will be disqualified. Should a Class 1<sup>st</sup> Place or 2<sup>nd</sup> Place, Division Champion or Reserve Champion weigh out, he would retain his status but would be ineligible to compete for the respective Breed or Division Champion or Reserve. Should a Class 1<sup>st</sup> Place or Division Champion weigh out, the respective Class 2<sup>nd</sup> Place or Division Reserve Champion would be eligible for Breed Champion. No other animals will move up.

**Grand Champion Re-weigh:** Prior to selection of the Grand and Reserve Grand Champion, all Breed Champions and Reserve Breed Champions may be re-weighed. Should a Champion or Reserve weigh-out, he would retain his status as Breed Champion or Reserve Breed Champion but be ineligible to compete for Grand or Reserve Grand Champion.

**Wave #1 Barrows** (Berkshire, Duroc, Dark Crossbred, Hampshire, Poland China, Spot) weighing more than 23 pounds heavier than the official turn-in Show Weight will be disqualified.

**Wave #2 Barrows** (Chester White, Landrace, Yorkshire, Crossbred) weighing more than 15 pounds heavier than the official turn-in Show Weight will be disqualified.

11. **Classification:** Breed must be declared upon Check-In. Breed changes by the exhibitor will not be allowed at any time after. Barrows will be subject to reclassification by a three-member committee. The decision of the three-member classifying committee will be final. See *Barrow Classification Standards*.
  - Any barrows reclassified in Wave #1 will be placed in the Dark Crossbred breed. Any barrows in Wave #1 not meeting at least the classification standards for the Dark Crossbred breed will be sifted.
  - Any barrows reclassified in Wave #2 will be placed in the Crossbred breed.

- Dark Crossbred (Wave 1) and Crossbred (Wave 2) class options may be entered at the time of Check-In.

12. **Ear Tags:** All ear tags, with the exception of Texas Validation Tag and USDA Official Premises Identification Number (PIN) tags, must be removed before showing. The Texas Validation Tag number will be used for animal identification. No tag alterations – Any change in size, shape, form, or color will void the tag.
13. **Ear Notches:** All animals must be properly ear notched within seven (7) days of birth with a litter notch in the right ear and individual notch in the left ear to be eligible for the Texas 4-H and FFA Swine Validation Program. Animals not properly notched in both ears will be subject to disqualification.
14. **Medication:** Administration of any medication to market animals that is not approved by the FDA is a violation of Federal law. Please refer to rule #29 of the General Rules. In instances where an animal has been administered a drug that is FDA approved for its species, the exhibitor must be aware that the time it takes for all drug residue to completely clear system **is generally longer than the labeled withdrawal time** for most drugs and varies from animal to animal.

UPDATED

15. **Fitting:** Foreign material including (but not limited to) painting, powdering, oiling, artificial coloring, or adhesives is prohibited upon arrival on Grounds. No clippers, which require an electrical current, are allowed to be used on Market Barrows once they arrive on the grounds. Cordless clippers are allowed, however, restraining the animal for clipping purposes is prohibited. Failure to comply with this rule will result in disqualification. The exhibitor is expected to feed, care for, fit, and exhibit their animal/project while at the San Antonio Stock Show & Rodeo. If needed, the exhibitor may have the assistance of the exhibitor's family, AST, CEA, Local County/Chapter Adult Volunteer or other 4-H or FFA members. Violators of this rule will be disqualified and may be barred from future participation.
16. **Equipment:** Blocking of aisles or doorways (with chairs, showboxes, feed pans, etc.) is strictly prohibited. All equipment must be stored safely above pens. **No tables will be permitted to be set up in the Livestock Barns. Nothing will be allowed to be set up in designated Fire Lanes.**
17. **Scales:** Scales will be provided in areas throughout the barn; such scales are unofficial and are provided for exhibitors' convenience only. Official scales will be used by Superintendents to determine official weights. No other scales will be allowed.

UPDATED

18. **Animals Outside of Barns:** Barrows must remain inside the Morris Activity Center, Swine Barn, Cattle Barn #2 or the designated exercise area on the North side of barns at all times. Any animal found outside of this area will be subject to disqualification.

#### 19. Additional Premiums:

**Certified Texas Bred Class Champions:** The Texas Pork Producers Association, Inc. may award premium money to top placing Certified Texas Bred barrows. A Certified Texas Bred Registry certificate from the breeder must be presented at the show to qualify.

20. **Classes:** Superintendents will break classes following completion of Check-In. There will be no pre-set weight breaks. Exhibitors missing their class are ineligible to compete in a different weight division and will be sifted. In the event of a large number of barrows with the same weight and the same breed, the show may break them into multiple classes using another method other than weight. To more effectively break classes, weights may be grouped by a maximum of 4 lb. increments and classes then broken using another method other than weight.

UPDATED

21. **Placing Barrows:** All placing barrows must sell in the Junior Market Barrow Auction. *All animals qualifying for the Junior Livestock Auction are required to have their photograph taken.*

#### a. ATTENDANCE:

- i. **WALKING LOTS:** All walking, sale-making exhibitors are encouraged to be present on Sale Day. Substitute exhibitors will be allowed with proper paperwork submitted through the Competitive Events Office.
- ii. **NON-WALKING LOTS:** Youth exhibitors with non-walking, sale-making lots do not attend the auction. A guaranteed-base Premium of \$1,500 will be awarded to each exhibitor of non-walking lots along with any funds generated through the Add-On Portal for that respective lot.
  - All exhibitors with 5<sup>th</sup> through 6<sup>th</sup> place barrows are non-walking lots.

NEW

22. **Scholarships:** Refer to the Junior Livestock Show Scholarship section of the 2024 Competitive Events Premium List.

**JUNIOR MARKET BARROW CLASSES & PLACINGS****Berkshire – Total Head Placed = 18**

<u>Class</u>	<u>Placing</u>
1	1 <sup>st</sup> through 6 <sup>th</sup>
2	1 <sup>st</sup> through 6 <sup>th</sup>
3	1 <sup>st</sup> through 6 <sup>th</sup>
4	<b>Champion Berkshire</b>
5	<b>Reserve Champion Berkshire</b>

**Spotted – Total Head Placed = 25**

<u>Class</u>	<u>Placing</u>
6	1 <sup>st</sup> through 5 <sup>th</sup>
7	1 <sup>st</sup> through 5 <sup>th</sup>
8	1 <sup>st</sup> through 5 <sup>th</sup>
9	1 <sup>st</sup> through 5 <sup>th</sup>
10	1 <sup>st</sup> through 5 <sup>th</sup>
11	<b>Champion Spotted</b>
12	<b>Reserve Champion Spotted</b>

**Poland China – Total Head Placed = 10**

<u>Class</u>	<u>Placing</u>
13	1 <sup>st</sup> through 5 <sup>th</sup>
14	1 <sup>st</sup> through 5 <sup>th</sup>
15	<b>Champion Poland China</b>
16	<b>Reserve Champion Poland China</b>

**Hampshire – Total Head Placed = 54**

<u>Class</u>	<u>Placing</u>
17	1 <sup>st</sup> through 6 <sup>th</sup>
18	1 <sup>st</sup> through 6 <sup>th</sup>
19	1 <sup>st</sup> through 6 <sup>th</sup>
20	1 <sup>st</sup> through 6 <sup>th</sup>
21	1 <sup>st</sup> through 6 <sup>th</sup>
22	1 <sup>st</sup> through 6 <sup>th</sup>
23	1 <sup>st</sup> through 6 <sup>th</sup>
24	1 <sup>st</sup> through 6 <sup>th</sup>
25	1 <sup>st</sup> through 6 <sup>th</sup>
26	<b>Light Wt. Division Winner</b>
27	<b>Light Wt. Division Runner-Up</b>
28	<b>Medium Wt. Division Winner</b>
29	<b>Medium Wt. Division Runner-Up</b>
30	<b>Heavy Wt. Division Winner</b>
31	<b>Heavy Wt. Division Runner-Up</b>
32	<b>Champion Hampshire</b>
33	<b>Reserve Champion Hampshire</b>

**Duroc – Total Head Placed = 54**

<u>Class</u>	<u>Placing</u>
34	1 <sup>st</sup> through 6 <sup>th</sup>
35	1 <sup>st</sup> through 6 <sup>th</sup>
36	1 <sup>st</sup> through 6 <sup>th</sup>
37	1 <sup>st</sup> through 6 <sup>th</sup>
38	1 <sup>st</sup> through 6 <sup>th</sup>
39	1 <sup>st</sup> through 6 <sup>th</sup>
40	1 <sup>st</sup> through 6 <sup>th</sup>
41	1 <sup>st</sup> through 6 <sup>th</sup>
42	1 <sup>st</sup> through 6 <sup>th</sup>
43	<b>Light Wt. Division Winner</b>
44	<b>Light Wt. Division Runner-Up</b>
45	<b>Medium Wt. Division Winner</b>
46	<b>Medium Wt. Division Runner-Up</b>
47	<b>Heavy Wt. Division Winner</b>
48	<b>Heavy Wt. Division Runner-Up</b>
49	<b>Champion Duroc</b>
50	<b>Reserve Champion Duroc</b>

**Dark Crossbred – Total Head Placed = 54**

<u>Class</u>	<u>Placing</u>
51	1 <sup>st</sup> through 6 <sup>th</sup>
52	1 <sup>st</sup> through 6 <sup>th</sup>
53	1 <sup>st</sup> through 6 <sup>th</sup>
54	1 <sup>st</sup> through 6 <sup>th</sup>
55	1 <sup>st</sup> through 6 <sup>th</sup>
56	1 <sup>st</sup> through 6 <sup>th</sup>
57	1 <sup>st</sup> through 6 <sup>th</sup>
58	1 <sup>st</sup> through 6 <sup>th</sup>
59	1 <sup>st</sup> through 6 <sup>th</sup>
60	<b>Light Wt. Division Winner</b>
61	<b>Light Wt. Division Runner-Up</b>
62	<b>Medium Wt. Division Winner</b>
63	<b>Medium Wt. Division Runner-Up</b>
64	<b>Heavy Wt. Division Winner</b>
65	<b>Heavy Wt. Division Runner-Up</b>
66	<b>Champion Dark Crossbred</b>
67	<b>Reserve Champion Dark Crossbred</b>

**Chester White – Total Head Placed = 15**

<u>Class</u>	<u>Placing</u>
68	1 <sup>st</sup> through 5 <sup>th</sup>
69	1 <sup>st</sup> through 5 <sup>th</sup>
70	1 <sup>st</sup> through 5 <sup>th</sup>
71	<b>Champion Chester White</b>
72	<b>Reserve Champion Chester White</b>

**Yorkshire – Total Head Placed = 30**

<u>Class</u>	<u>Placing</u>
73	1 <sup>st</sup> through 5 <sup>th</sup>
74	1 <sup>st</sup> through 5 <sup>th</sup>
75	1 <sup>st</sup> through 5 <sup>th</sup>
76	1 <sup>st</sup> through 5 <sup>th</sup>
77	1 <sup>st</sup> through 5 <sup>th</sup>
78	1 <sup>st</sup> through 5 <sup>th</sup>
79	<b>Light Wt. Division Winner</b>
80	<b>Light Wt. Division Runner-Up</b>
81	<b>Heavy Wt. Division Winner</b>
82	<b>Heavy Wt. Division Runner-Up</b>
83	<b>Champion Yorkshire</b>
84	<b>Reserve Champion Yorkshire</b>

**Landrace – Total Head Placed = 6**

<u>Class</u>	<u>Placing</u>
85	1 <sup>st</sup> through 3 <sup>rd</sup>
86	1 <sup>st</sup> through 3 <sup>rd</sup>
87	<b>Champion Landrace</b>
88	<b>Reserve Champion Landrace</b>

**Crossbred – Total Head Placed = 80*****Division I***

<u>Class</u>	<u>Placing</u>
89	1 <sup>st</sup> through 5 <sup>th</sup>
90	1 <sup>st</sup> through 5 <sup>th</sup>
91	1 <sup>st</sup> through 5 <sup>th</sup>
92	1 <sup>st</sup> through 5 <sup>th</sup>

***Division II***

<u>Class</u>	<u>Placing</u>
93	1 <sup>st</sup> through 5 <sup>th</sup>
94	1 <sup>st</sup> through 5 <sup>th</sup>
95	1 <sup>st</sup> through 5 <sup>th</sup>
96	1 <sup>st</sup> through 5 <sup>th</sup>
97	<b>Division I Winner</b>
98	<b>Division I Runner-Up</b>
99	<b>Division II Winner</b>
100	<b>Division II Runner-Up</b>

***Division III***

<u>Class</u>	<u>Placing</u>
101	1 <sup>st</sup> through 5 <sup>th</sup>
102	1 <sup>st</sup> through 5 <sup>th</sup>
103	1 <sup>st</sup> through 5 <sup>th</sup>
104	1 <sup>st</sup> through 5 <sup>th</sup>

***Division IV***

<u>Class</u>	<u>Placing</u>
105	1 <sup>st</sup> through 5 <sup>th</sup>
106	1 <sup>st</sup> through 5 <sup>th</sup>
107	1 <sup>st</sup> through 5 <sup>th</sup>
108	1 <sup>st</sup> through 5 <sup>th</sup>
109	<b>Division III Winner</b>
110	<b>Division III Runner-Up</b>
111	<b>Division IV Winner</b>
112	<b>Division IV Runner-Up</b>
113	<b>Champion Crossbred</b>
114	<b>Reserve Champion Crossbred</b>

**MARKET BARROW GRAND DRIVE**

115	<b>Grand Champion Market Barrow</b>
116	<b>Reserve Grand Champion Market Barrow</b>

***Grand Total Placing = 346***

**BARROW CLASSIFICATION STANDARDS FOR WAVE #1****BERKSHIRE****Ideal**

- Predominantly black possessing Berkshire breed character with regards to skull shape and ear shape.
- A Berkshire should have six white points: nose, each leg/foot and at end of tail (unless tail is docked).
- Erect ears.

**Acceptable**

- An occasional splash of white skin/hair may appear on the body.
- Three of the four legs/feet must be white.
- Ear can have white on it (not full coverage).
- Red or fawn hair, if over black or white skin pigmentation.
- Ear deformity/ear folded in a backwards position towards hog's body (crinkled ear).

**Discriminatory**

- Gray pigmentation on the body (spotting or mottling pattern).
- Moderate amount of white skin splashes.

**Absolute Disqualification**

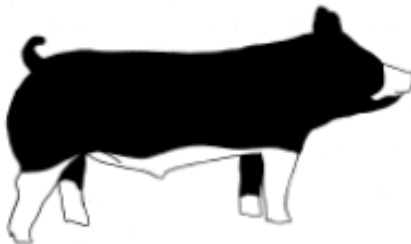
- Solid white or solid black face from base of ear forward.
- Solid black nose (white does not break rim of nose).
- Solid white ear.
- Excessive white on the body.
  - a. Full coverage of white coming up the lower one-third of the body (not including legs) that extends from the base of the jaw through sternum and lower body through seam of the ham.
  - b. White splash extends from rear leg to upper hip.
- White skin or hair that continuously encircles the body anywhere between the base of the ear and the base of the tail.
- Any evidence of belt formation on the body.
- Lacks breed character with regards to skull and/or ear shape.
- Any evidence of physical tampering that would alter breed character.

**BERKSHIRE****Breed Classification Guidelines****Ideal:****Acceptable:**

Three of the four legs/feet  
must be white.



An occasional splash of white skin/  
hair may appear on the body.

**Discriminatory:**

Moderate  
amount of  
white skin  
splashes.

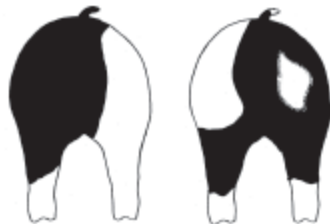
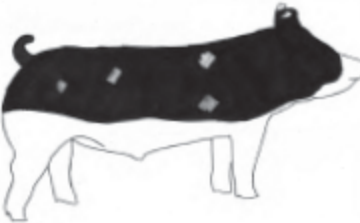


**Absolute Disqualification:**

Solid white or solid black face from the base of the ear forward.



White skin or hair that continuously encircles the body anywhere between the base of the ear and the base of the tail.



Excessive white on the body.

- a. Full coverage of white coming up the lower one-third of the body (not including legs) that extends from the base of the jaw through sternum and lower body through seam of the ham.
- b. White splash extends from rear leg to upper hip.



Solid white ear.



Solid black nose (white does not break the rim of the nose).



Lacking Berkshire breed character with regards to skull shape and ear shape.



**SPOTTED****Ideal**

- Must be black and white, possessing Spotted breed character.
- Ears are down when hog is in a relaxed position.

**Acceptable**

- Predominantly black with white spots or predominantly white with black spots.
- Ear deformity/ear folded in a backwards position towards hog's body (crinkled ear).

**Discriminatory**

- Partially erect/level ears.
- Moderate brown spots.

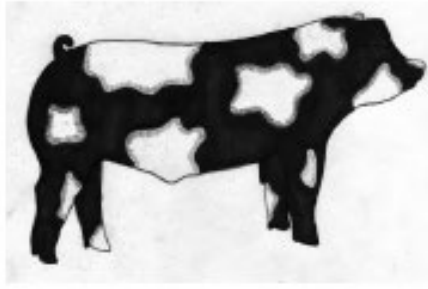
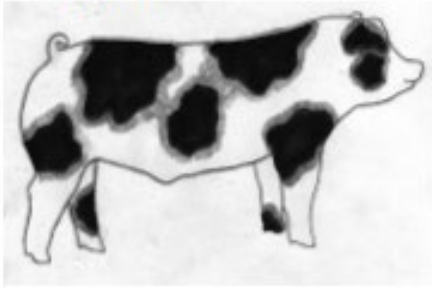
**Absolute Disqualification**

- Erect ears.
- Solid black head from base of ears forward.
- Distinct white belt pattern (hair or skin) encircling and extending down and onto each shoulder.
- Red hair.
- Excessive brown spots.
- Any evidence of physical tampering that would alter breed character

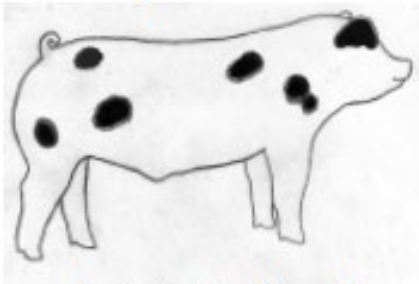
**POLAND CHINA & SPOTTED****Ideal:****Discriminatory:****Absolute Disqualification:**

## SPOTTED

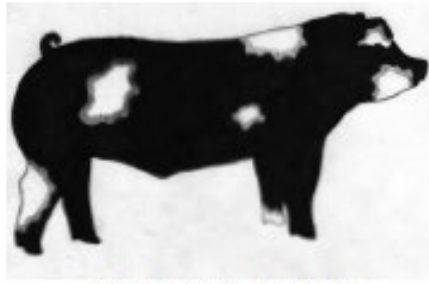
### Ideal:



### Acceptable:

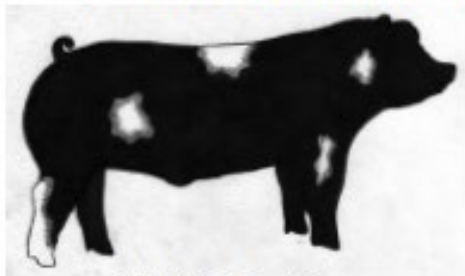


Predominantly white with  
black spots.



Predominantly black with  
white spots.

### Absolute Disqualification:



Solid black head from  
base of ears forward.



Distinct white belt pattern (hair  
or skin) encircling and extending  
down and onto each shoulder.

**POLAND CHINA****Ideal**

- Predominantly black possessing Poland China breed character.
- A Poland China should have six white points: nose, each leg/foot and at the end of the tail (unless tail is docked).
- Ears are down when hog is in a relaxed position.

**Acceptable**

- A slight continuation of white from the legs to the body.
- Ear may have white on it.
- Three of the four legs must be white.
- May have an occasional splash of white on the body.
- Hair and skin texture can vary from coarse to thin, and color can vary from dark black to ashy/pale.
- Ear deformity/ear folded in a backwards position towards hog's body (crinkled ear).

**Discriminatory**

- Partially erect/level ears.
- A moderate continuation of white from the legs to the body.
- Moderate freestanding white, not attached to a leg.

**Absolute Disqualification**

- Erect ears.
- Solid white or solid black face.
- More than one solid black leg.
- If the white on a solid white ear goes past the base of the ear.
- An excessive continuation of white from the legs, encompassing the upper hip or shoulder.
- Excessive freestanding white, not attached to a leg.
- Evidence of belt formation.
- Red or sandy hair.
- Any evidence of physical tampering that would alter breed character.

**POLAND CHINA & SPOTTED****Ideal:****Discriminatory:****Absolute Disqualification:**

**POLAND CHINA****Ideal:****Acceptable:**

A slight continuation of white from the legs to the body.



Ear may have white on it.



Three of the four legs must be white.



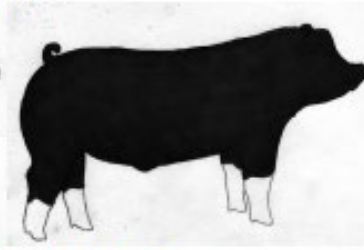
May have an occasional splash of white on the body.

**Discriminatory:**

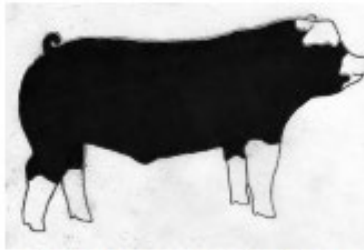
A moderate continuation of white from the legs to the body or moderate freestanding white, not attached to a leg.

**Absolute Disqualification:**

Solid white or solid black face.



More than one solid black leg.



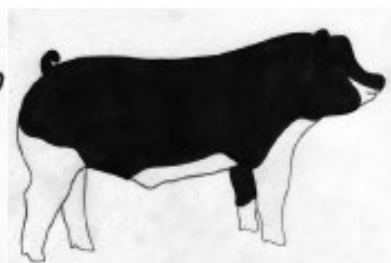
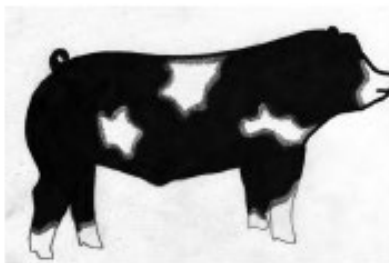
If the white on a solid white ear goes past the base of the ear.



Evidence of belt formation.



An excessive continuation of white from the legs, encompassing the upper hip or shoulder.



Excessive freestanding white, not attached to a leg.



**HAMPSHIRE****Ideal**

- Black in color with a full white belt over the shoulders encompassing both front legs/feet.
- Possess Hampshire breed character with regards to skull shape and ear shape.
- Erect ears.

**Acceptable**

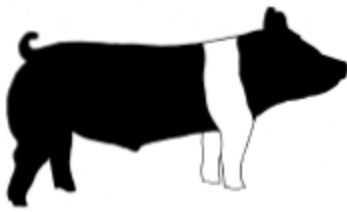
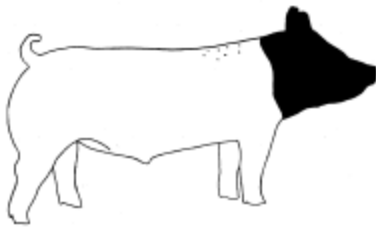
- Black head with a white body, with evidence of pigment and freckling down the top.
- White belt starting on a front foot/leg; belt partially encircles body extending to at least the chest floor (half belt).
- Freckling in the belt.
- Ear deformity/ear folded in a backwards position towards hog's body (crinkled ear).

**Discriminatory**

- Large spots within the belt.
- Belt is in front of or behind a solid black front leg.
- If belt v's and progresses towards the poll (base of the ear).
- White tip on tail, if docked.
- White on rear leg extends to the base of the ham.

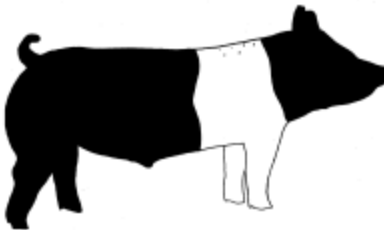
**Absolute Disqualification**

- Streaking or evidence of white on forehead.
- White skin extends over the rim of the nose.
- When mouth is closed, the white under the chin cannot exceed what a U.S. minted quarter will cover.
- Black head with a white body without freckles or pigmentation.
- Belt extends past the sheath (sheath must be black).
- Excessive frosting or white hair outside the belt.
- Red hair.
- Droopy or floppy ears.
- Any evidence of physical tampering that would alter breed character.

**HAMPSHIRE****Ideal:****Acceptable:**

Black head with a white body, with evidence of pigment and freckling down the top.

White belt starting on a front foot/leg; belt partially encircles body extending to at least the chest floor (half belt).



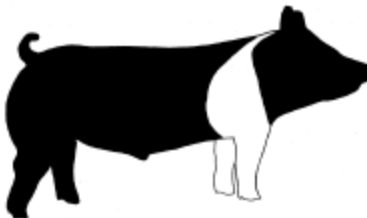
Freckling in the belt.

White on rear leg is below the base of the ham.

**Discriminatory:**

Large spots within the belt.

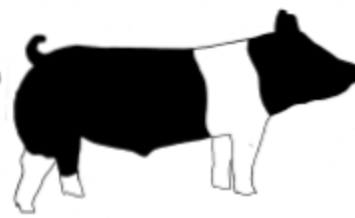
Belt is in front of or behind a solid black front leg.



If belt v's and progresses towards the poll (base of the ear).



White tip on tail, if docked.



White on rear leg extends to the base of the ham.



**Absolute Disqualification:**

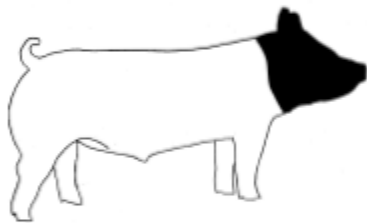
Streaking or evidence of white on forehead.



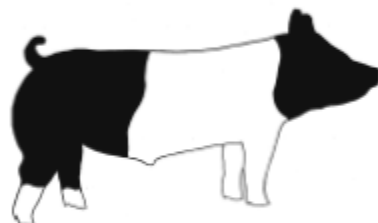
White skin extends over the rim of the nose.



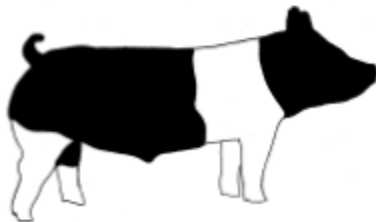
White under the chin cannot exceed what a U.S. minted quarter will cover.



Black head with a white body without freckles or pigmentation.



Belt extends past the sheath (sheath must be black).



White on rear leg extends above the base of the ham.



**DUROC****Ideal**

- Must be red in color, possessing Duroc breed character.
- Ears are down when hog is in a relaxed position.

**Acceptable**

- Acceptable colors range from light red to dark brown.
- Ear deformity/ear folded in a backwards position towards hog's body (crinkled ear).

**Discriminatory**

- Minimal amounts of black hair.
- Black spots on the skin under two inches in diameter.
- Partially erect/level ears.

**Absolute Disqualifications**

- Excessive amounts of black hair.
- White hair.
- White skin on the body or legs, or that extends over the rim of the nose.
- Four (4) or more black spots on the skin, any of which are larger than two (2) inches in diameter.
- Evidence of a belt.
- Erect ears.
- Any evidence of physical tampering that would alter breed character.

**DUROC****Ideal:****Discriminatory:****Absolute Disqualification:****DARK CROSSBRED**

- Barrows with black and/or red pigmentation (i.e. not sandy, rusty, orange, roan, gray or blue), comprising at least 20% of total body area, shall be considered a Dark Cross. These barrows may be black or red belted, black/red patched or spotted. Barrows with only blue, rusty, sandy, orange, and gray pigmentation are NOT considered Dark Crosses. Barrows that do not meet the breed classification requirements for Dark Crossbred will not be reclassified.

**BARROW CLASSIFICATION STANDARDS FOR WAVE #2****CHESTER WHITE****Ideal**

- Solid white in color possessing Chester White breed character.
- Medium sized ears are down when hog is in a relaxed position.

**Acceptable**

- Ear deformity/ear folded in a backwards position towards hog's body (crinkled ear).

**Discriminatory**

- Partially erect/level ear.
- Skin pigmentation.

**Absolute Disqualification**

- Erect ears.
- Colored hair.
- Color on the skin, cumulatively larger than a U.S. minted silver dollar.
- Any evidence of physical tampering that would alter breed character.

**CHESTER WHITE****Ideal:****Discriminatory:****Absolute Disqualification:**

**LANDRACE****Ideal**

- Must be solid white possessing Landrace breed character.
- Large ears that droop and slant forward coming to a sharp point.

**Acceptable**

- Ear deformity/ear folded in a backwards position towards hog's body (crinkled ear).

**Discriminatory**

- Short rounded ears.
- Short snout mimicking that of a Chester White.

**Absolute Disqualification**

- Erect ears.
- Any hair color other than white.
- More than 3 spots of skin pigmentation; each individual spot cannot be larger than a U.S. minted quarter.
- Any evidence of physical tampering that would alter breed character.

**LANDRACE****Ideal:****Discriminatory:****Absolute Disqualification:**

**YORKSHIRE****Ideal**

- Must be completely white in color possessing Yorkshire breed character.
- Erect ears.

**Acceptable**

- Ear deformity/ear folded in a backwards position towards hog's body (crinkled ear).

**Discriminatory**

- Excessively large or wavy ears.
- Color pigmentation (on body):
  - a. Two individual pigmentation spots of which neither can be larger than a U.S. minted dime.
  - b. One pigmentation spot cannot be larger than a U.S. minted quarter.

**Absolute Disqualification**

- Any hair color that is NOT white.
- Broken/down ears.
- Combined pigmentation spots that exceed a U.S. minted silver dollar.
- Any series of dots that indicate masking.
- Any evidence of physical tampering that would alter breed character.

**YORKSHIRE:****Ideal:****Discriminatory:****Absolute Disqualification:****CROSSBRED**

- Barrows of any coloration pattern or pigmentation are eligible for entry in this breed.

## QUALITY PORK CONTEST

### **SPECIAL RULES**

Insofar as possible, a Quality Pork Contest will be conducted. A minimum of 34 barrows, including the Breed Champions, Reserve Breed Champions, Weight Division Winners, and Weight Division Runner-Ups, will be processed for information.

#### **Minimum Standards**

1. Minimum and maximum for hot carcass weight, 165 to 230 pounds, respectively.
2. Carcass muscle score is to be equal to or better than the Intermediate (2.0) pictured in the 2000 "Composition and Quality Assessment Procedures," National Pork Board.
3. Carcass meat quality will be subjectively evaluated for the following using the 2000 "Composition and Quality Assessment Procedures," National Pork Board.
  - a. Loin muscle color score greater than 1 and less than 6
  - b. Loin muscle marbling score greater than 1
  - c. Loin muscle firmness and wetness score greater than 1
  - d. Belly at least slightly thick with a minimum of 0.6 inches of thickness at any point
  - e. Abnormalities (Soft, oily fat; steatosis)

Carcasses failing to meet two or more of the minimum quality standards as outlined will be disqualified.

4. Percentage Fat Free Lean will be predicted by the following equation ("Composition and Quality Assessment Procedures," National Pork Board):

#### **Equation for pounds of fat-free lean (FFL)**

$$\begin{aligned}
 &8.588 - 21.896 \times 10\text{th rib fat depth, inches} \\
 &+ 3.005 \times 10\text{th rib loin muscle area, square inches} \\
 &+ 0.465 \times \text{warm carcass weight, pounds}
 \end{aligned}$$

**To convert to % fat-free lean, divide by warm carcass weight and multiply by 100**

5. Other disqualifications:
  - a. Cryptorchids
  - b. Carcass that requires more than 1% trim due to "old" bruises or infected at injection site, abnormalities, cysts, abscesses, diseased joints, etc.

The carcass judge will select and place the top 10 carcasses on overall carcass merits from among the 15 carcasses with the highest percent fat free lean(FFL). The following awards will be given for 1<sup>st</sup> through 5<sup>th</sup> place.

### **QUALITY PORK CONTEST PLACINGS & PREMIUMS**

Grand Champion	Reserve Champion	3rd	4th	5th
\$300	\$250	\$200	\$150	\$100